

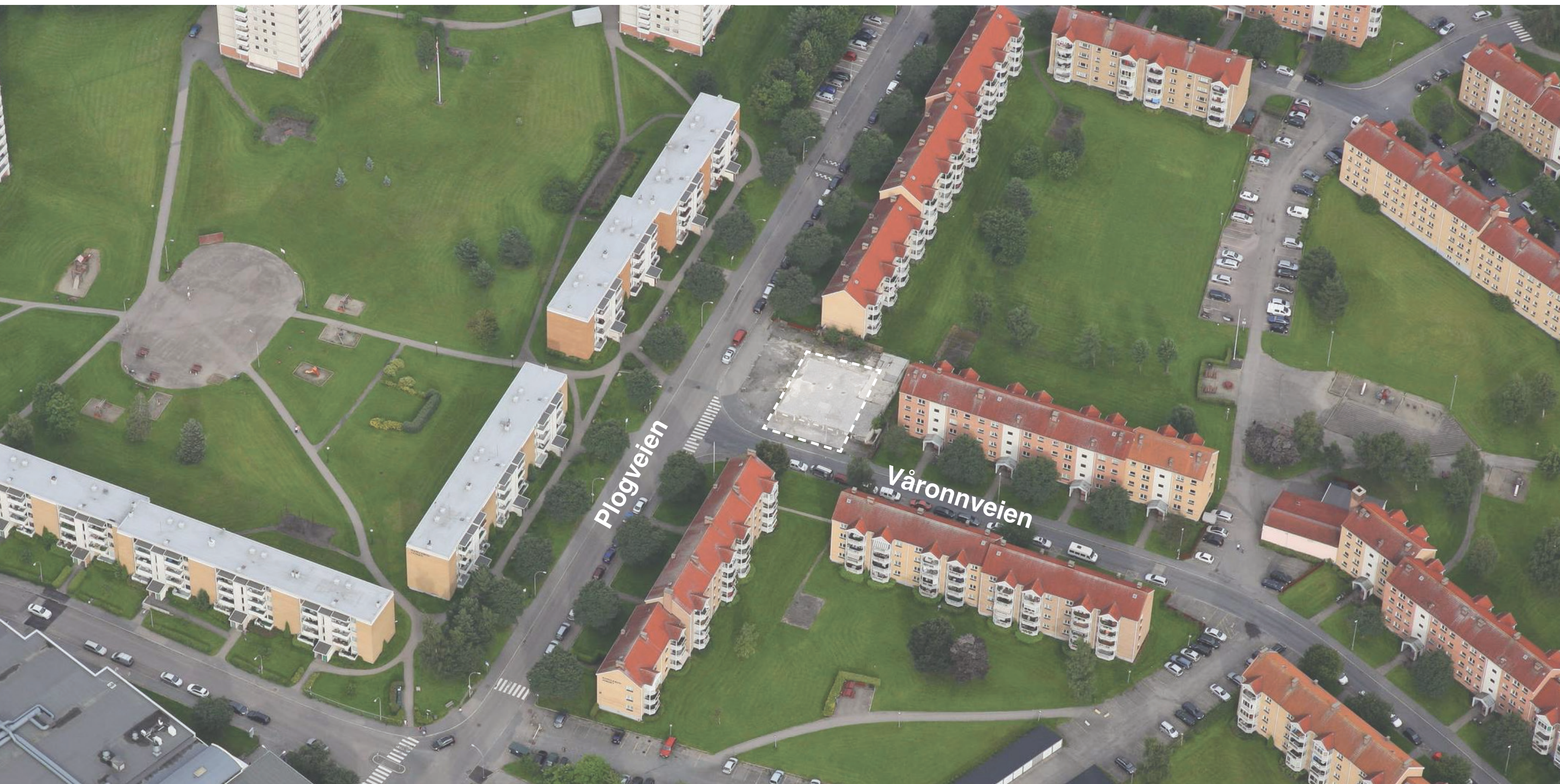
FutureBuilt

Grønne boliger med svarte tall 15.05.2018

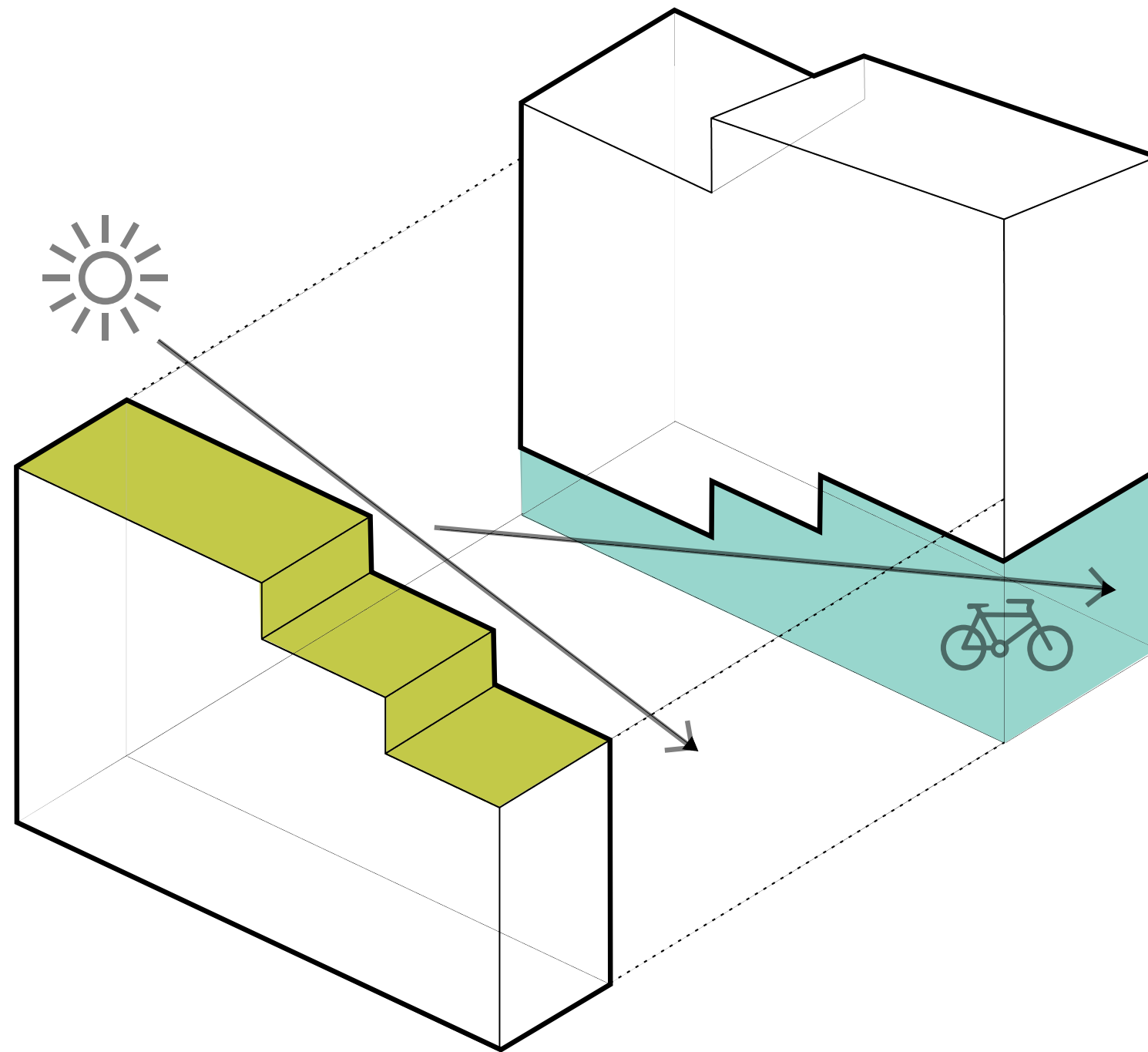
VÅRONNA NABOLAG

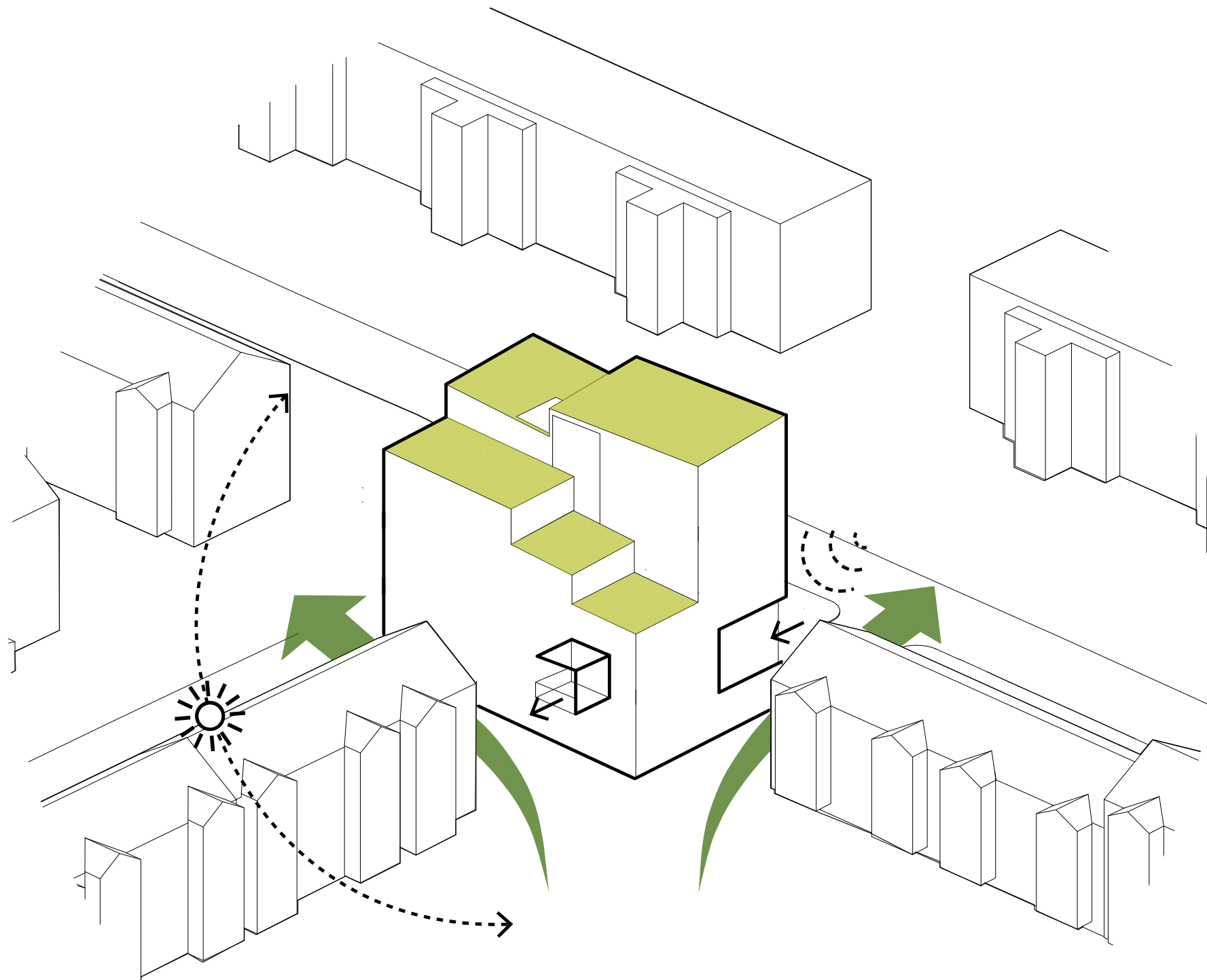
HELEN & HARD



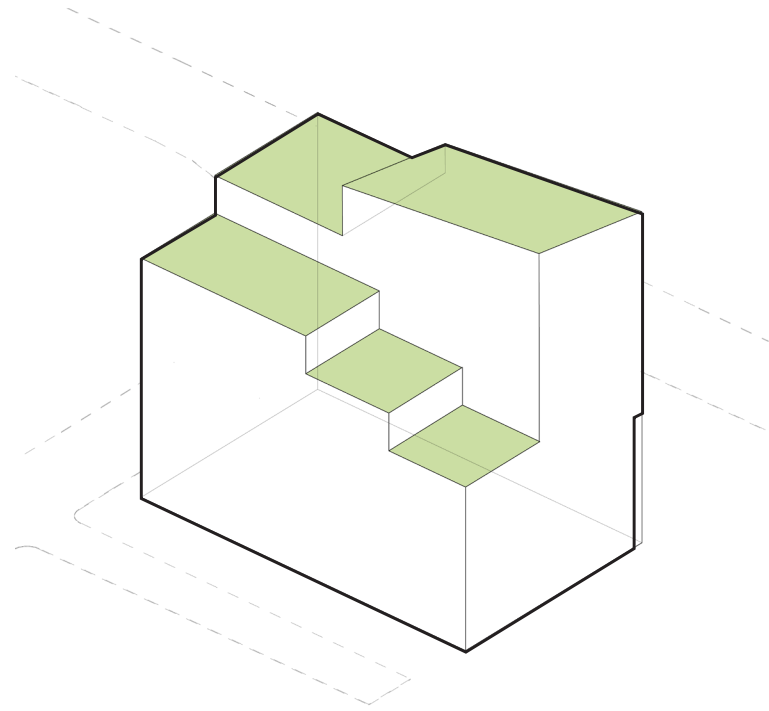




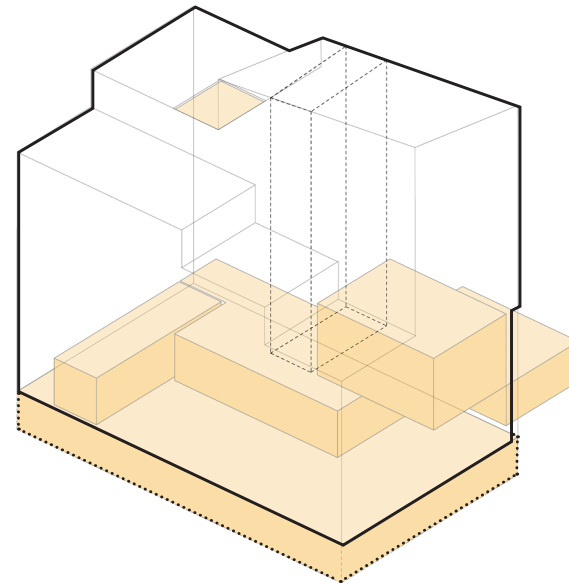




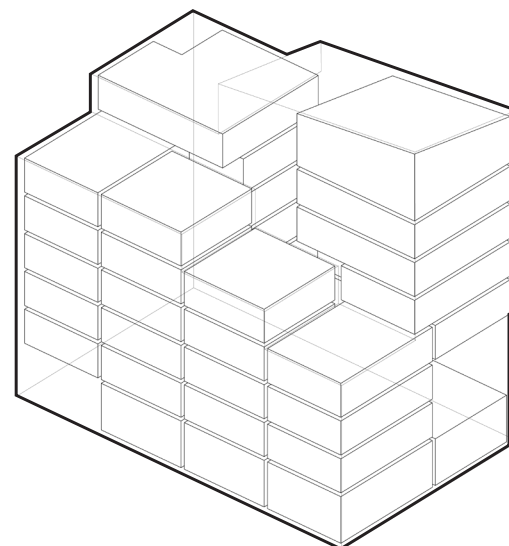
- Opprettholde **siktlinjer**
- Forbindelse mellom gate og gårdsrom
- Avstand til nabobygg
- **Nedtrapping mot sol**
- **Subtraksjon og addisjon:**
 - Støy fra gate gir vinterhager
 - Gode solforhold og grøntareal gir balkonger
- Ekstrovert henvendelse mot gata
- Grønt areal mot gårdsrom



Takflater 360 m²
Takterrasse, fordrøyning og solcellepark

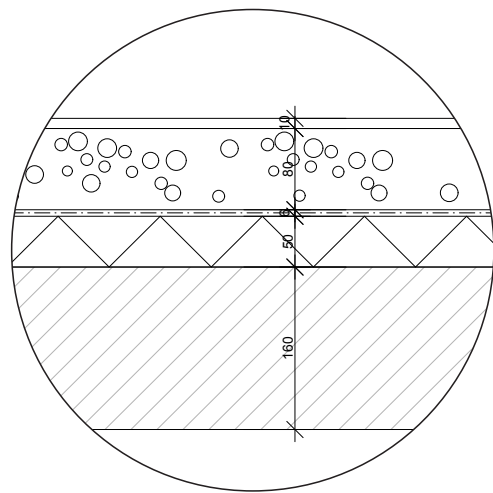


Fellesrom: 90 m²
Takterrasser: 45+16 m²
Kafé/Sykkelverksted: 65 m²



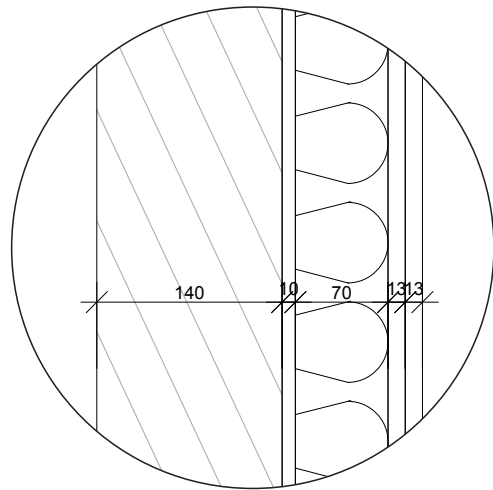
*Antall boenheter: **32***

SMART SYSTEM



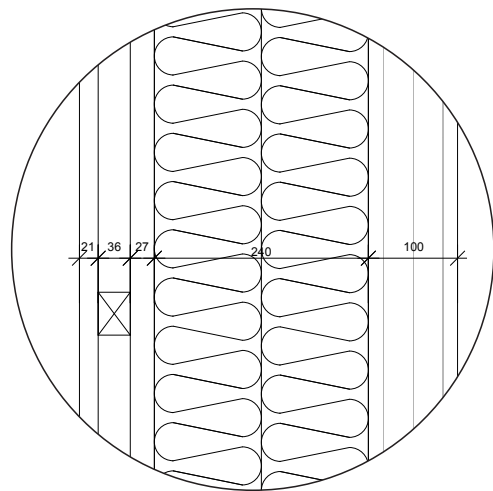
> Prinsipp for oppbygning av dekke

Parkettunderlag
Pukk med varmerør
Sperresjikt
Trinnlydplate
Massivtre



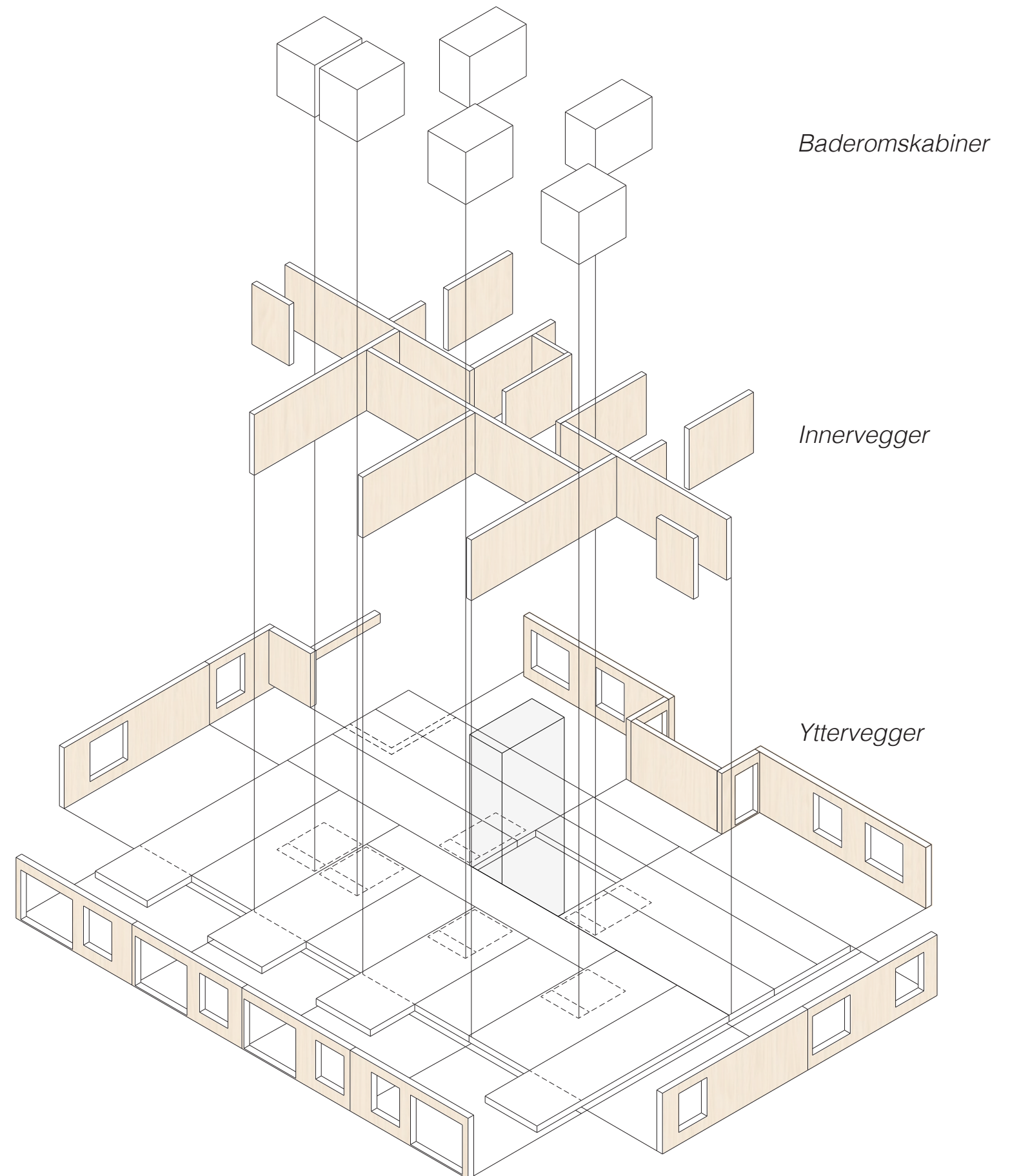
> Prinsipp for oppbygning av innervegg

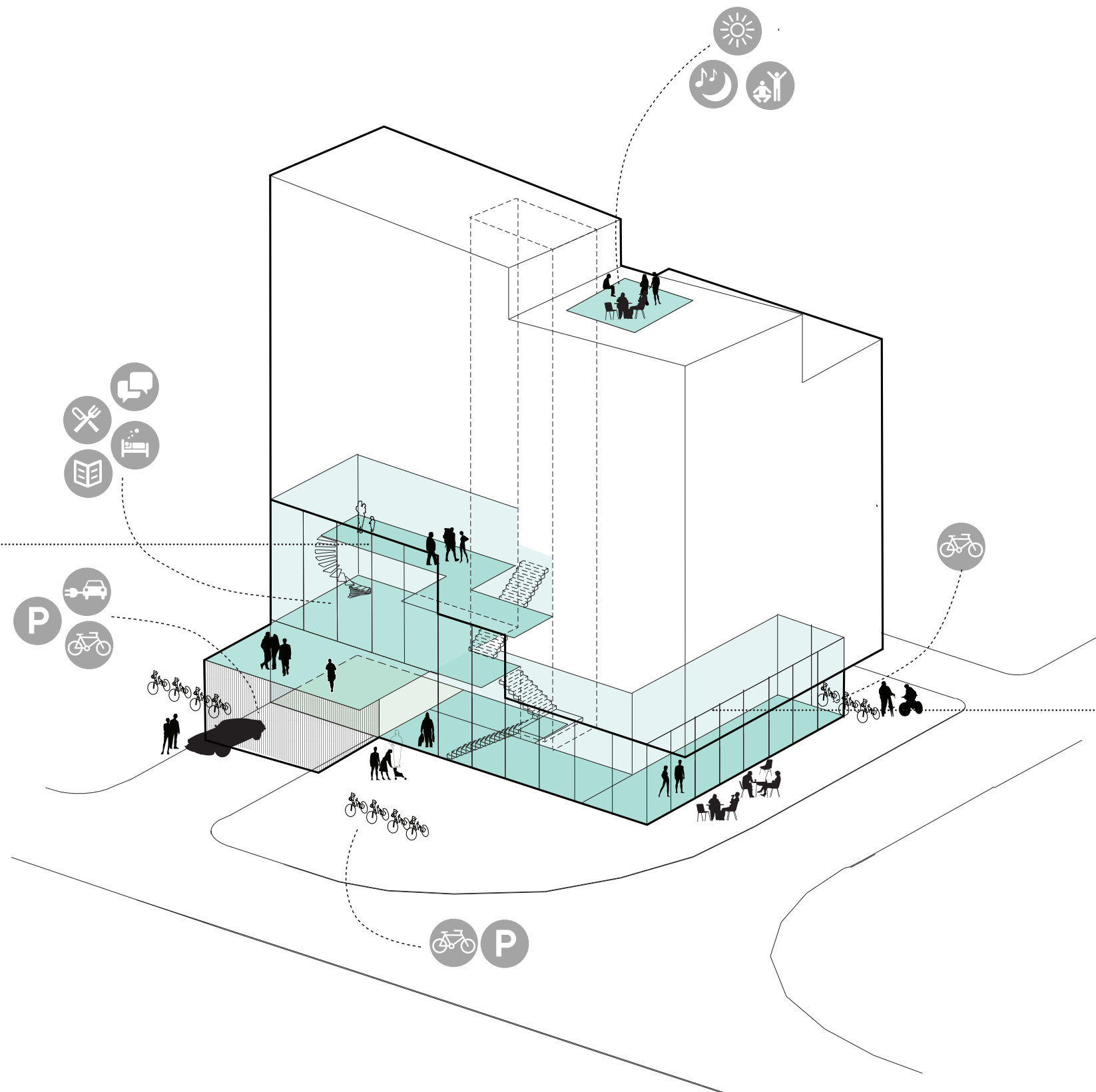
Massivtre
Luftsjikt
Isolasjon
Gipsplate x2



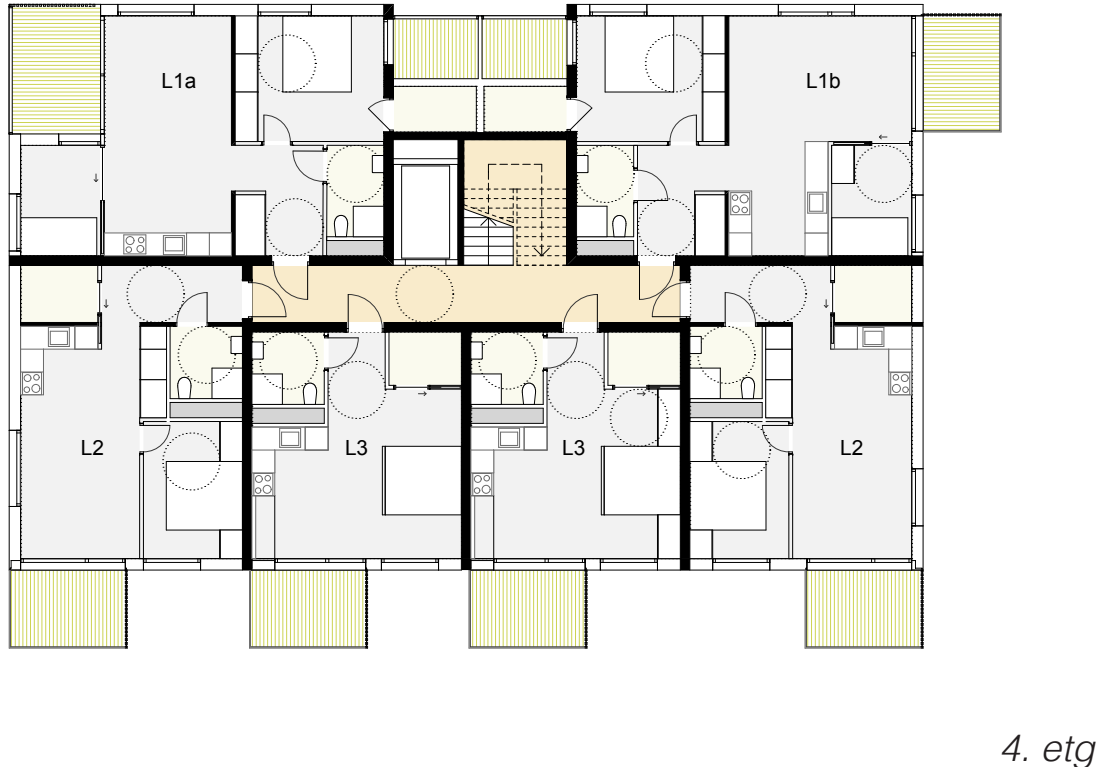
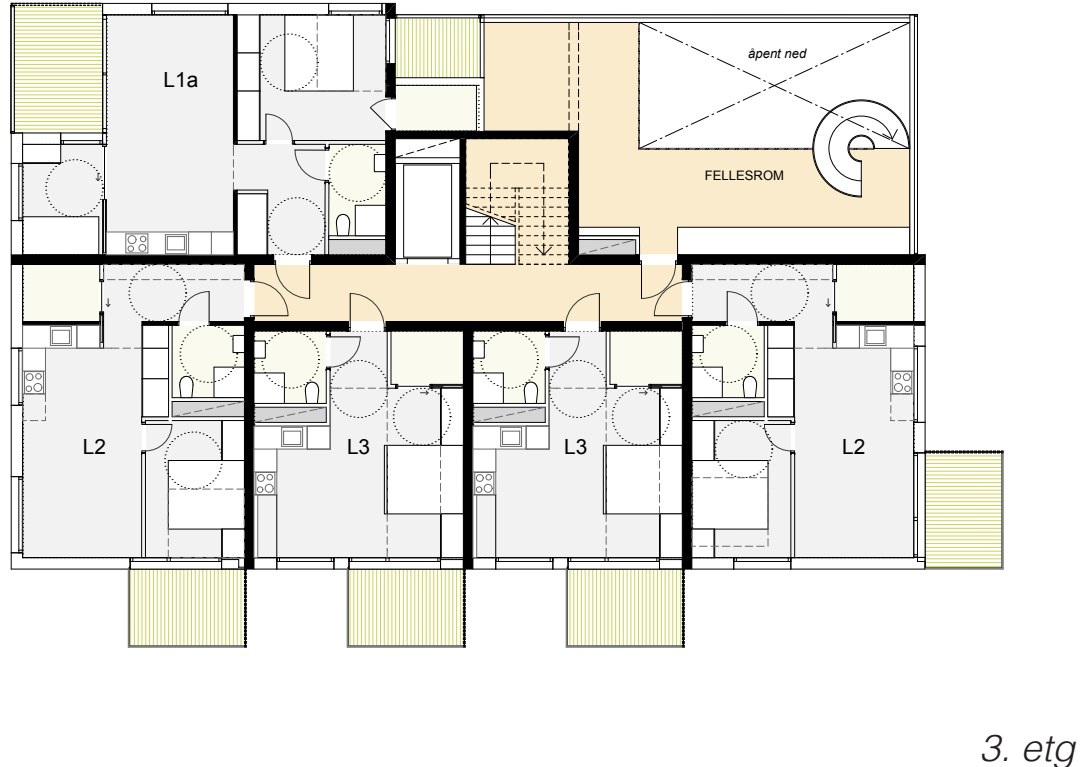
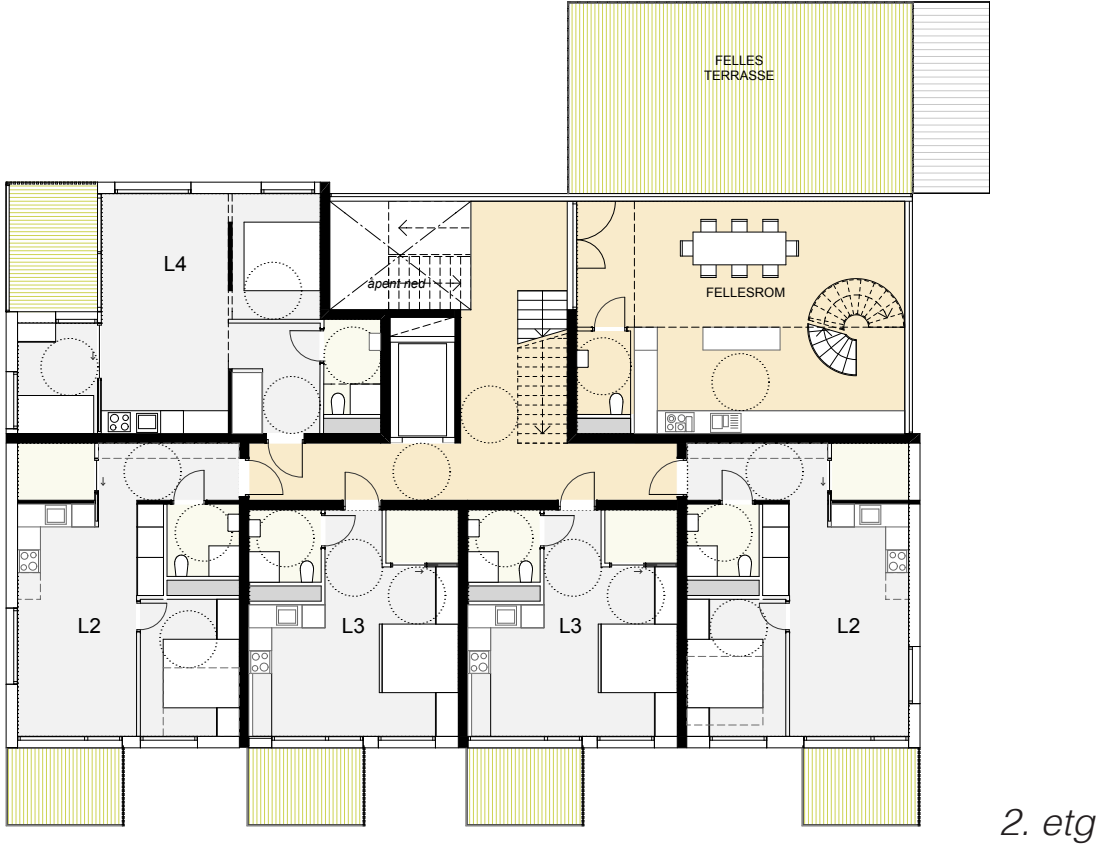
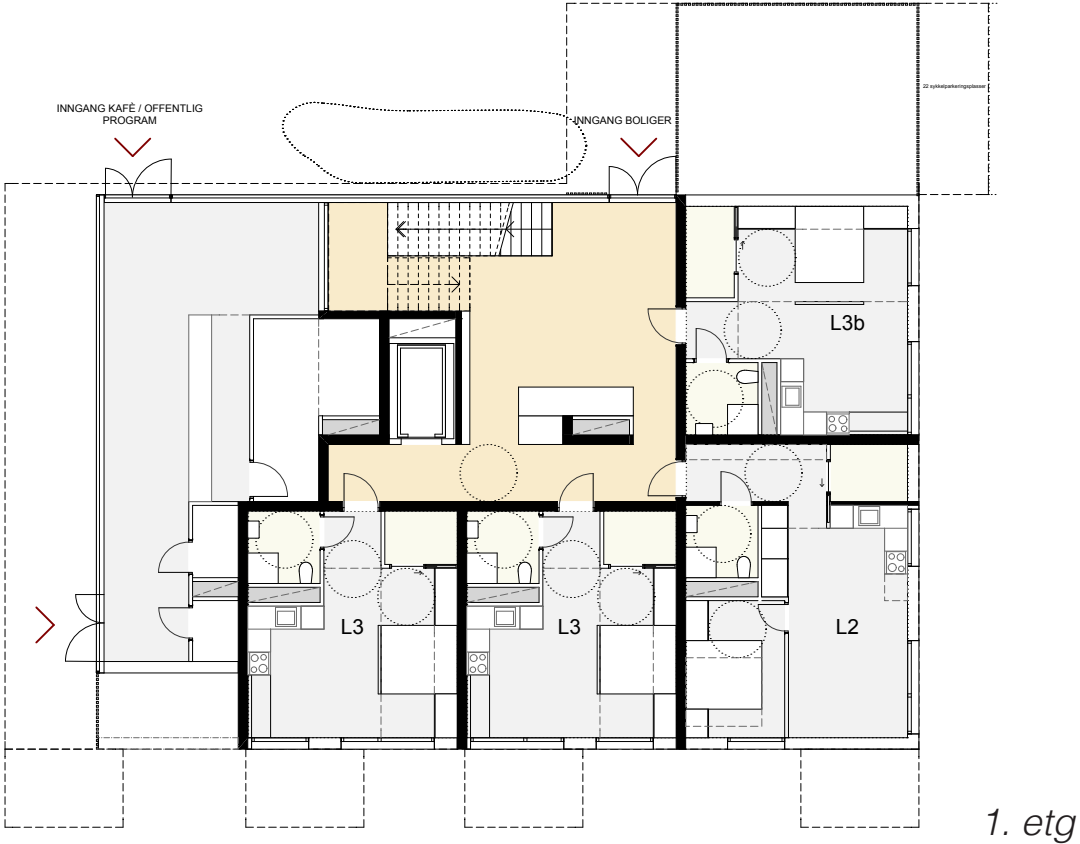
> Prinsipp for oppbygning av yttervegg

Massivtre
Isolasjon
Krysslekting
Kledning, kjerneved av malmfuru

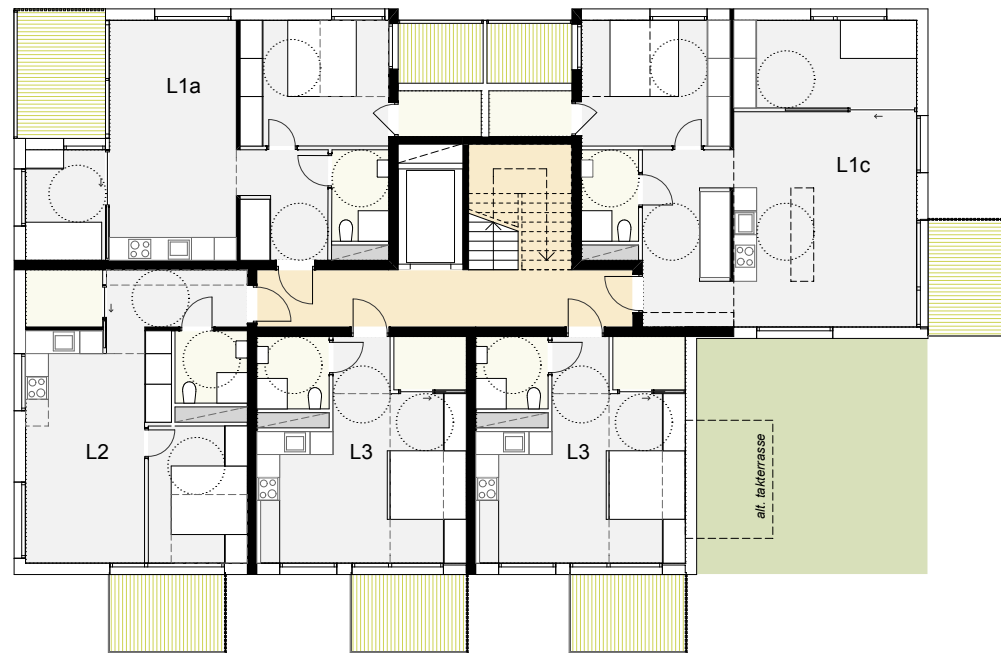




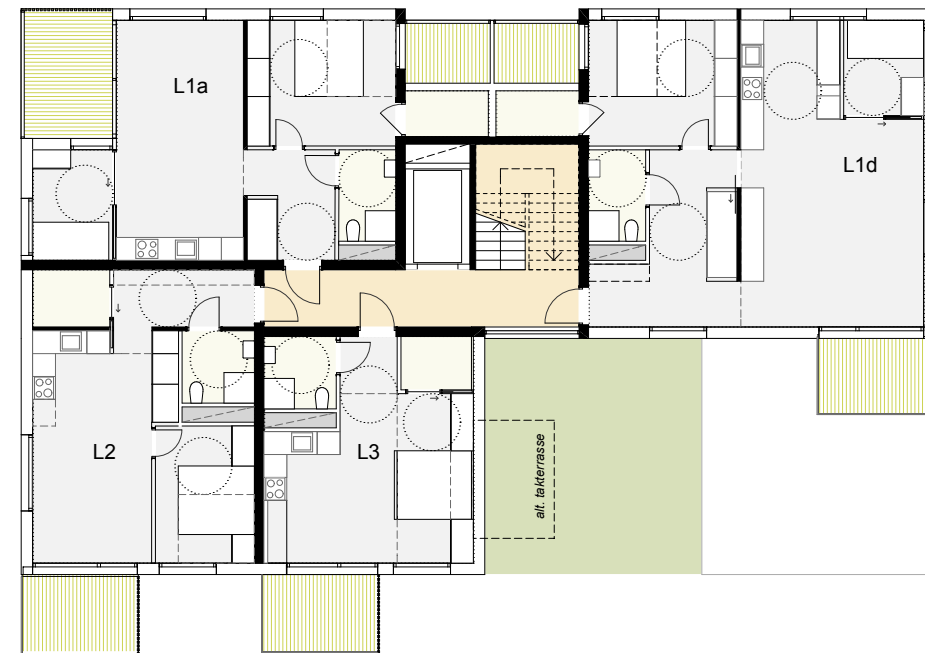
SMART SYSTEM



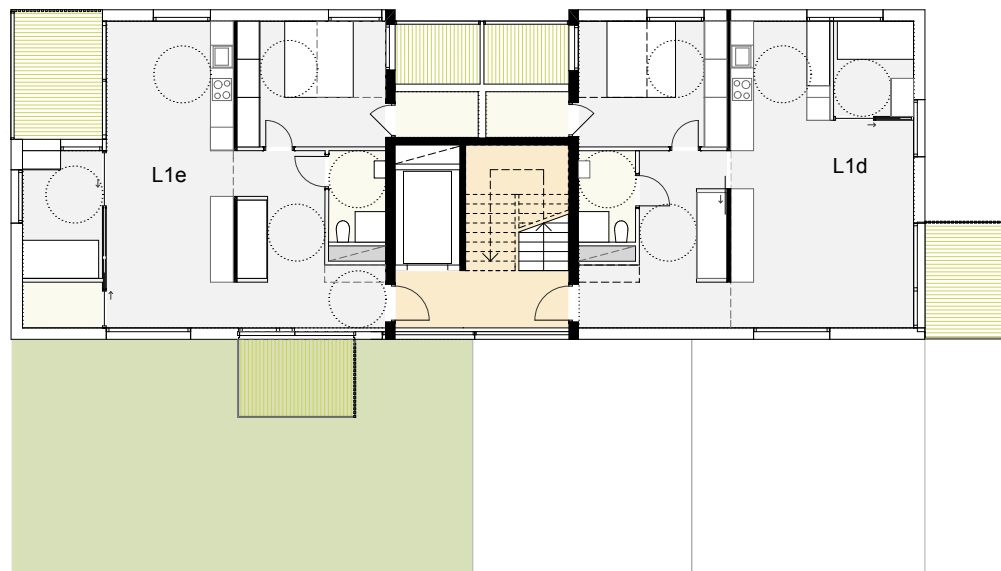
SMART SYSTEM



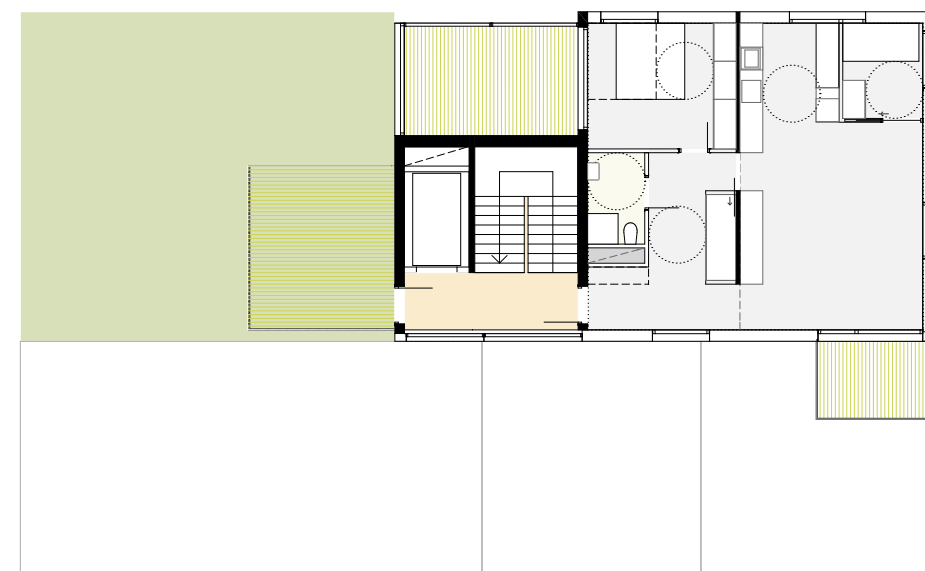
5. etg



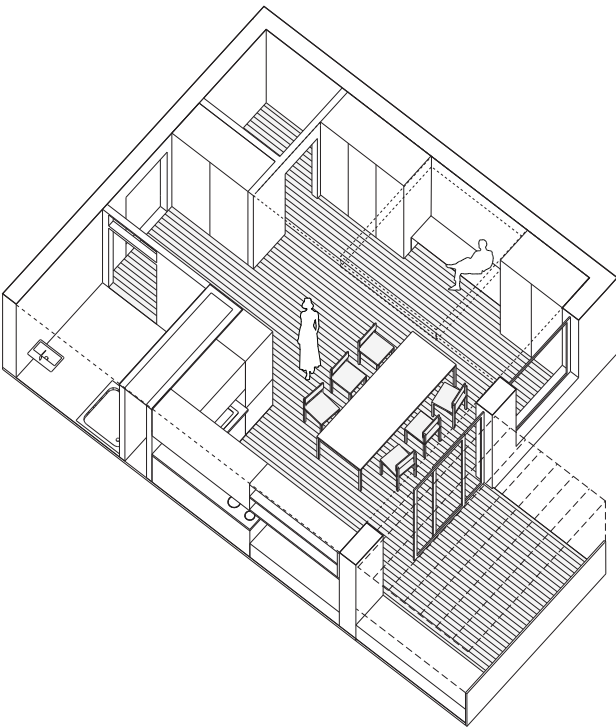
6. etg



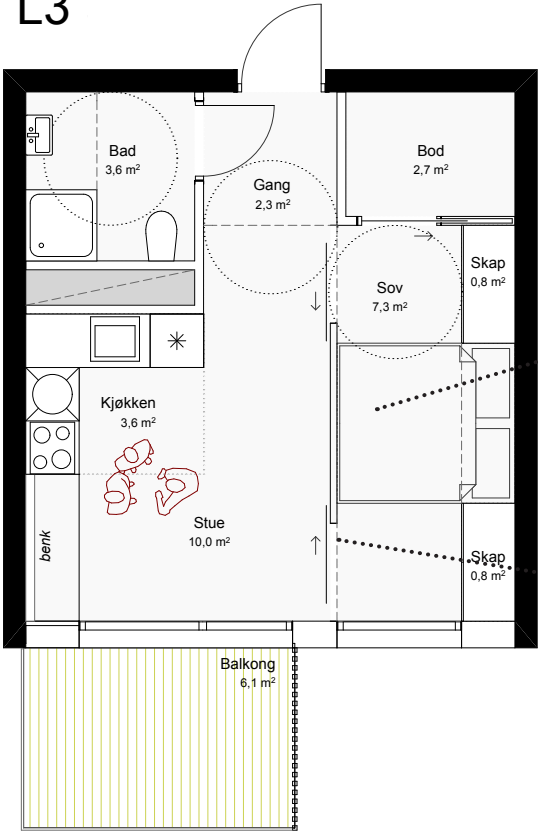
7. etg



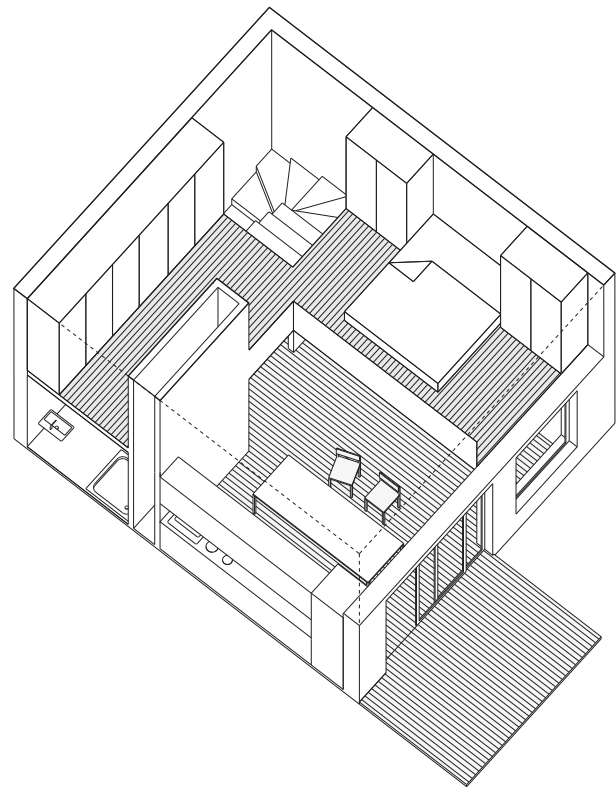
8. etg



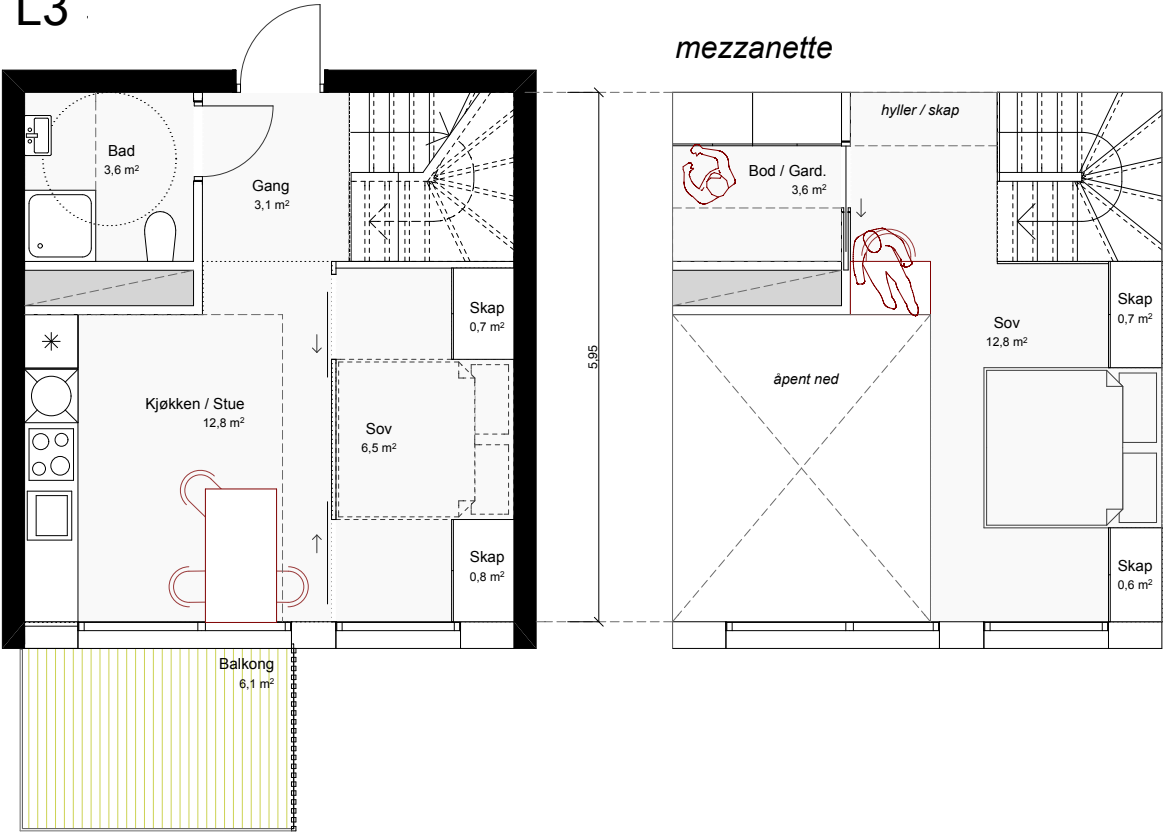
L3

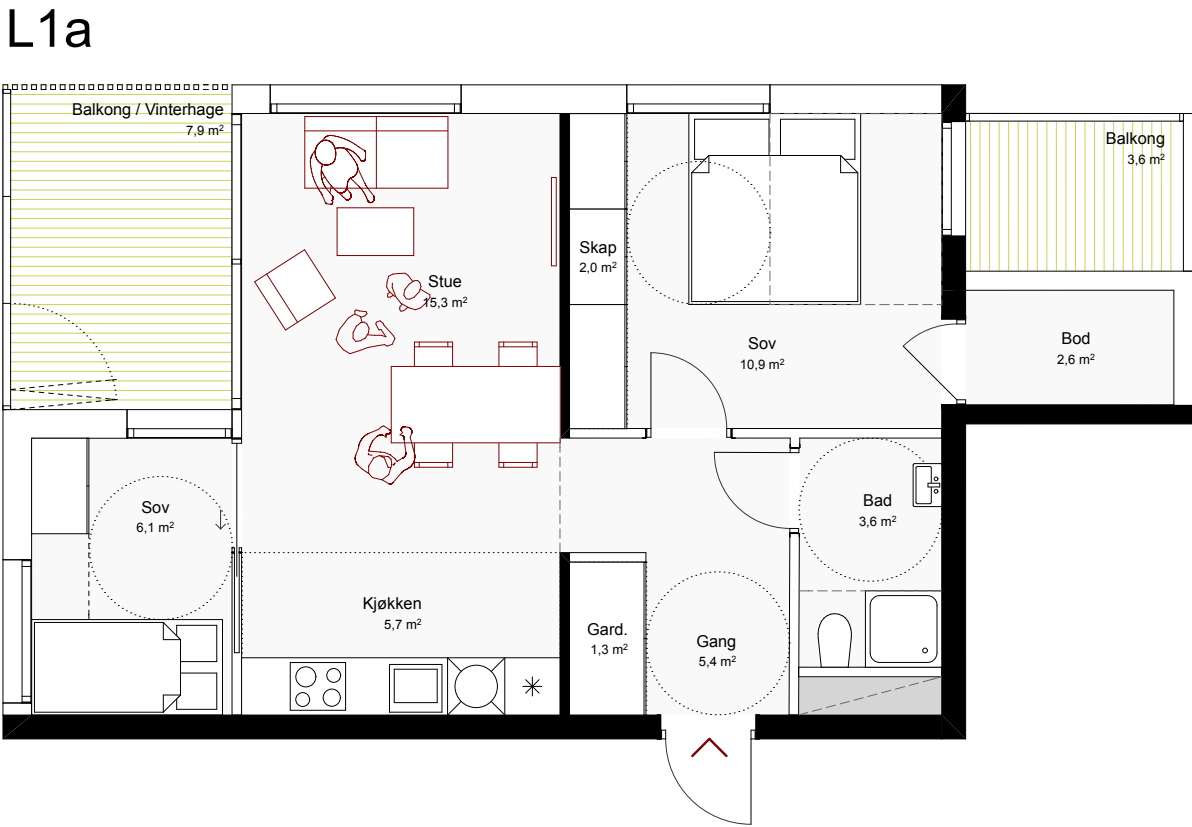
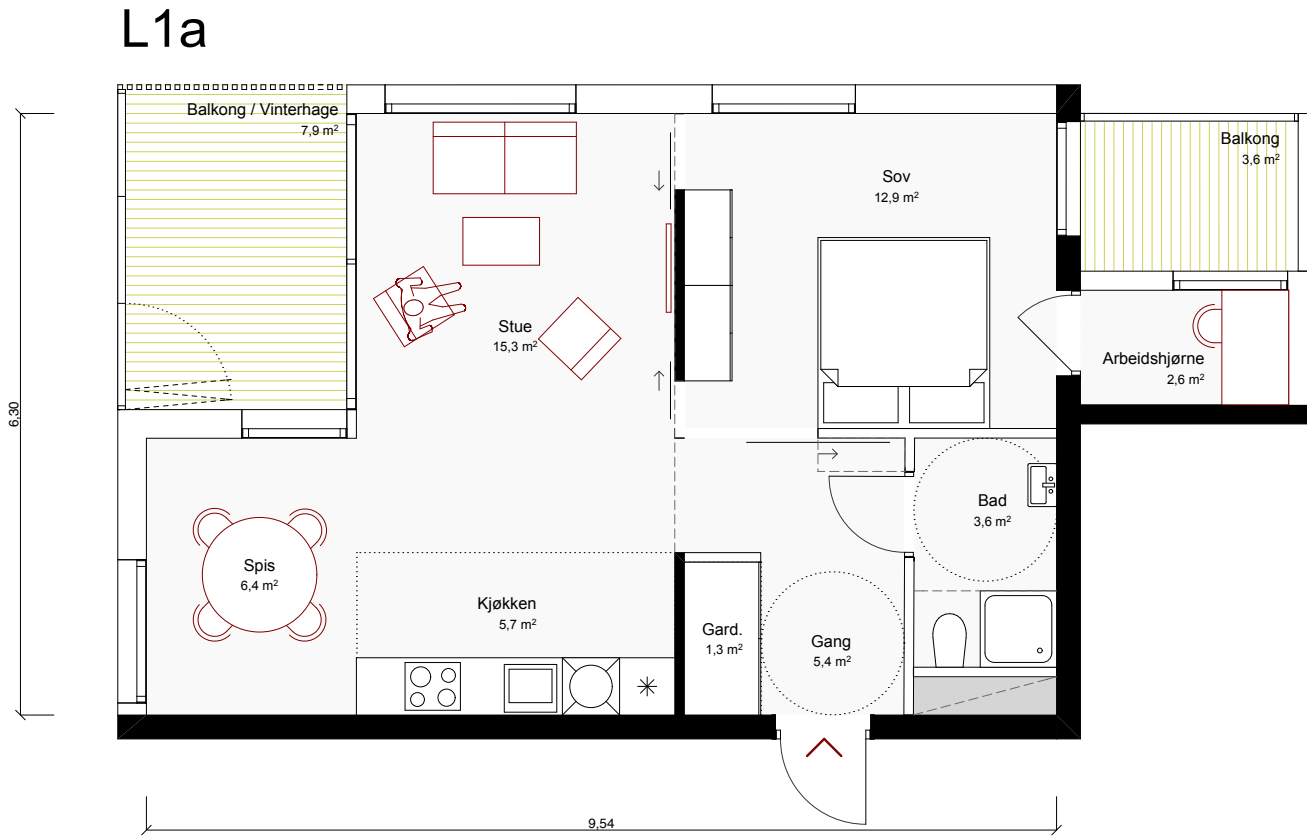


Garasjeportsystem, Doorstudia



L3



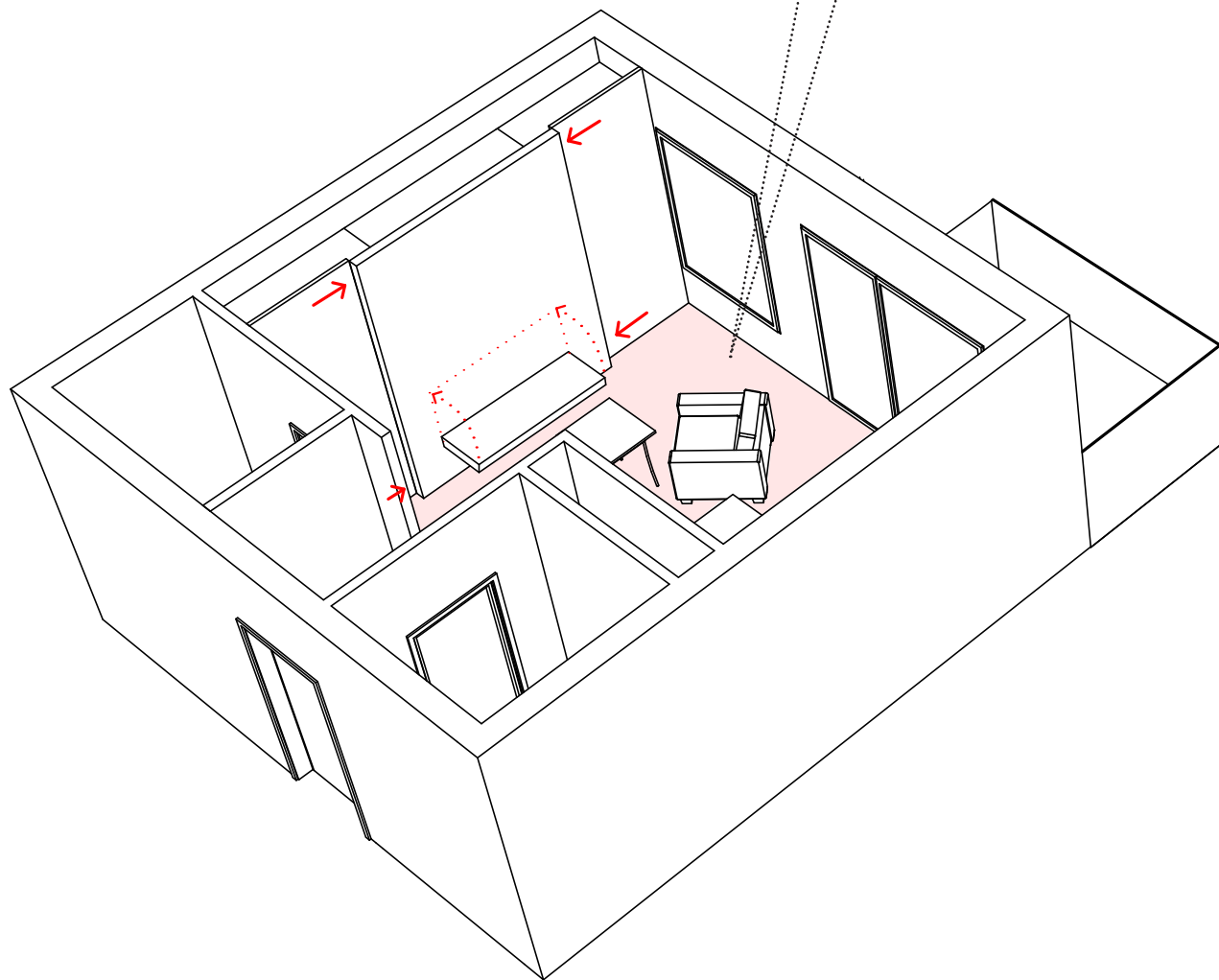


FLEKSIBILITET

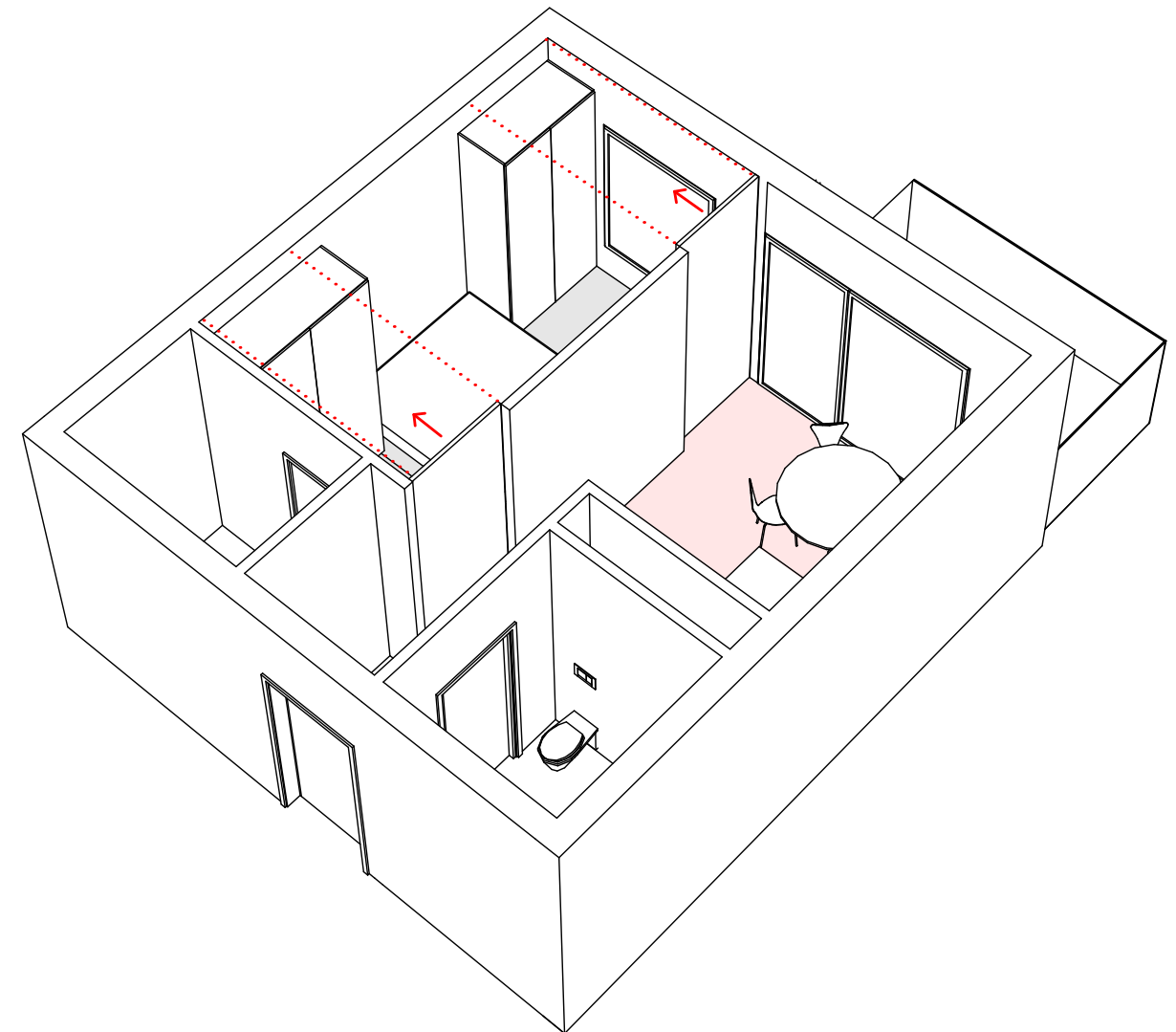


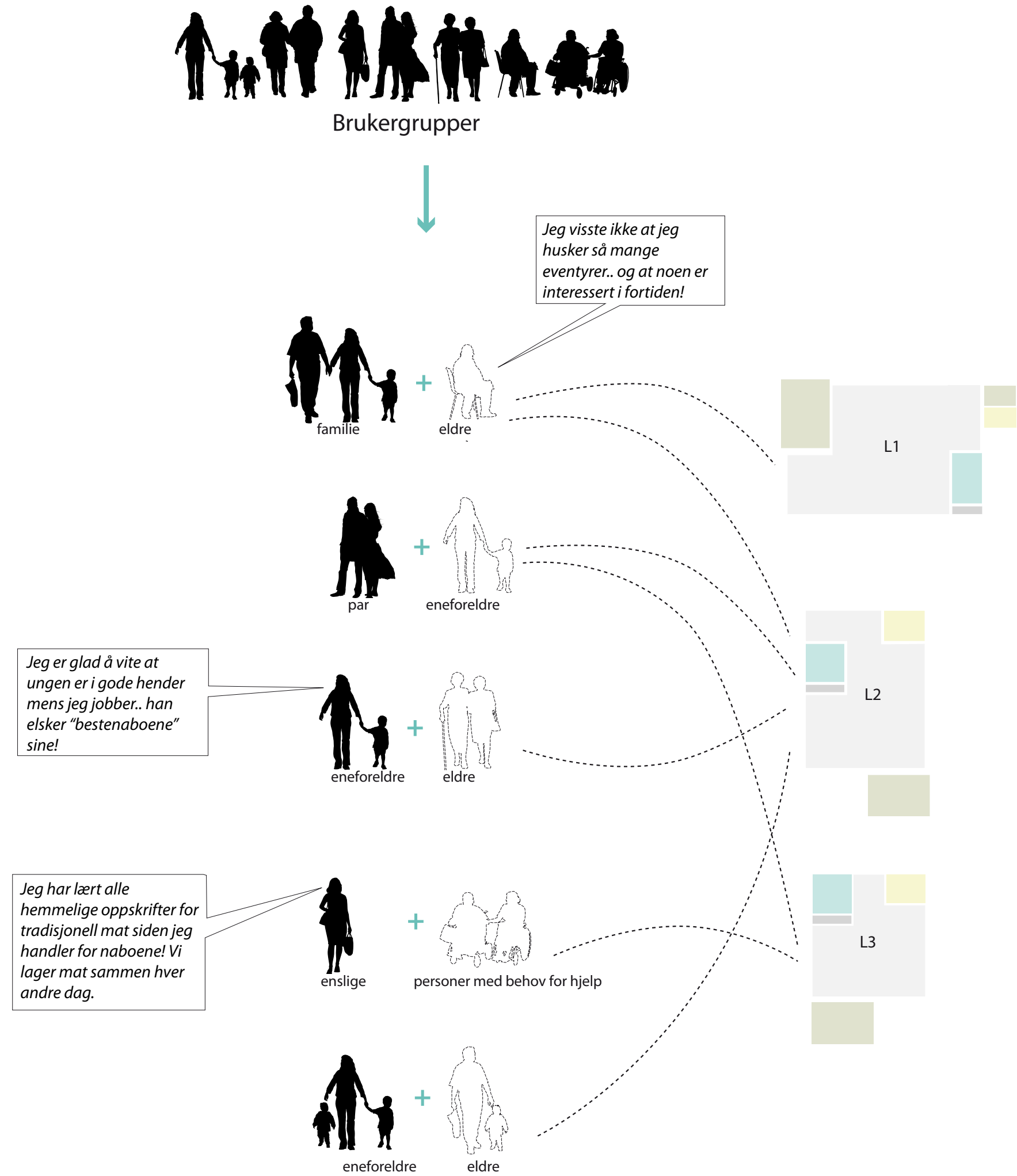
kl 08:00 > 23:00

1. seng foldes opp
2. vegg flyttes mot skap
3. sofa / benk foldes ned



kl 23:00 > 08:00







VINDMØLLEBAKKEN

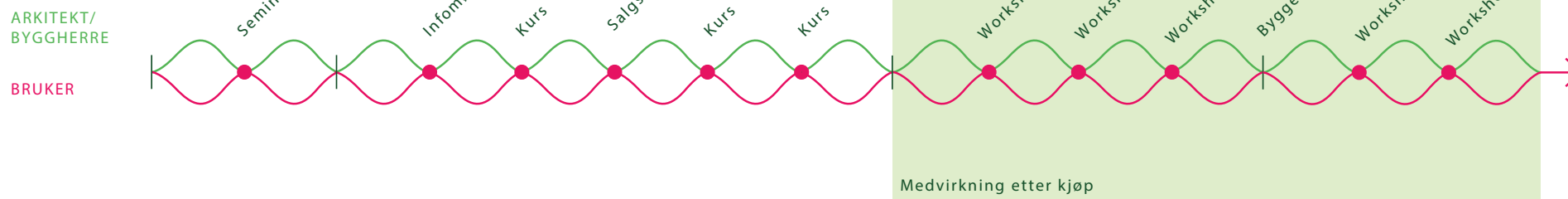
Et Gaining by Sharing pilotprojekt

Ny prosess: Brukermedvirkning fra tidlig fase

REFERANSEPROSJEKT

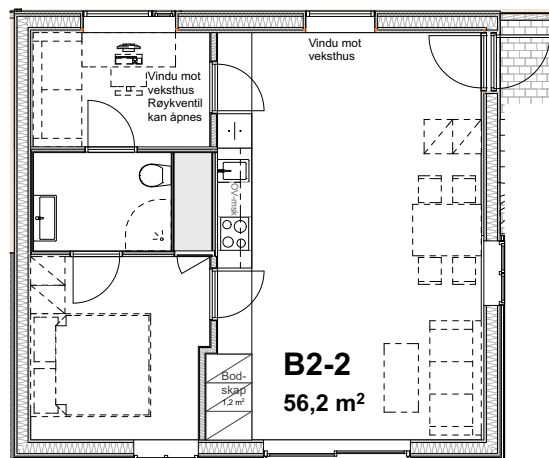


VINDMØLLEBAKKEN



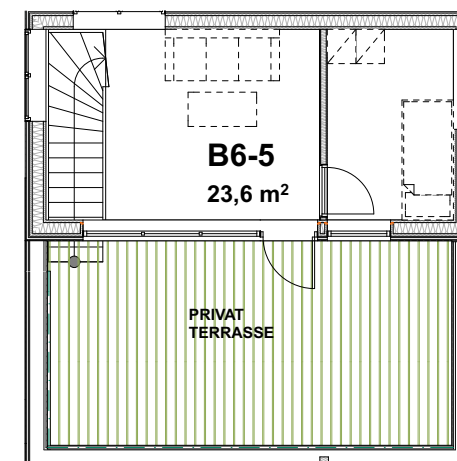
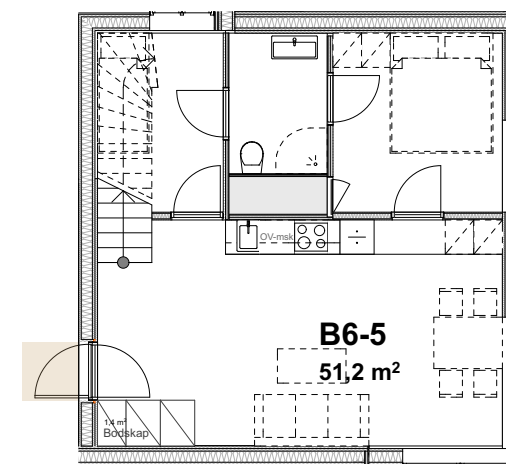
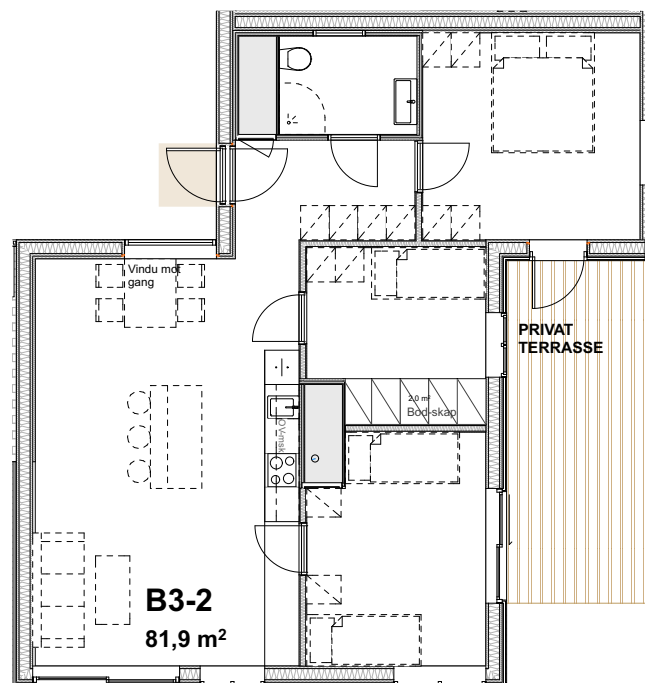
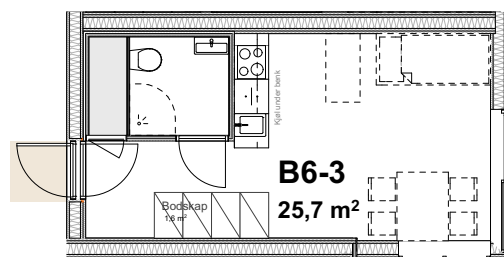
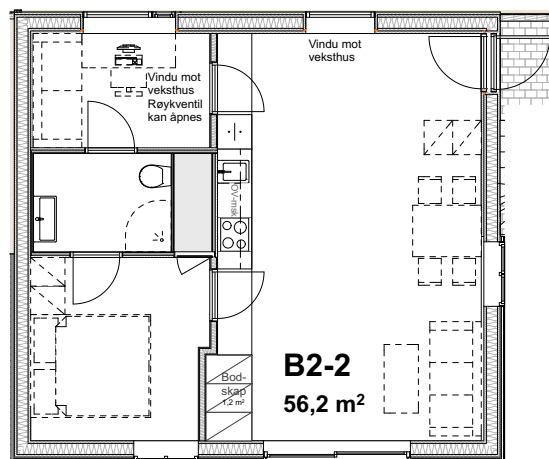
Et enklere liv

Eie mindre og ha tilgang på arealer og funksjoner når man trenger det



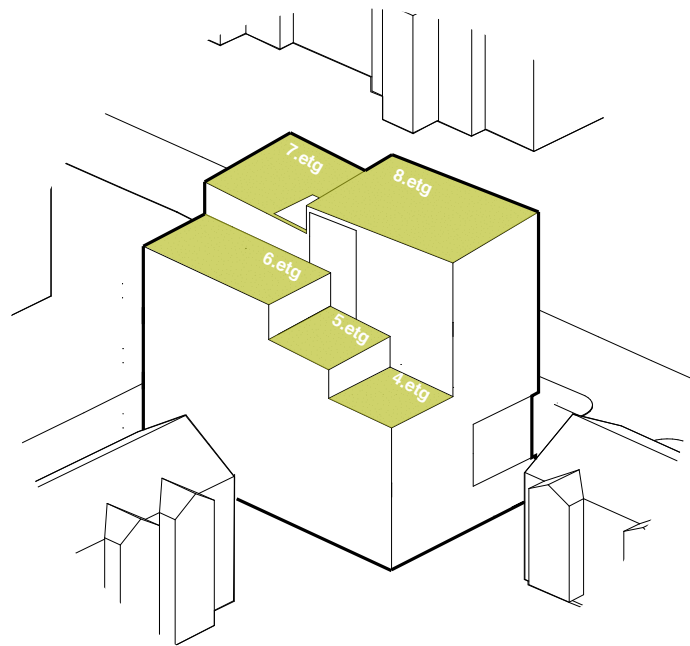
Mangfold

Bolig typologier for ulike alder og livsfaser



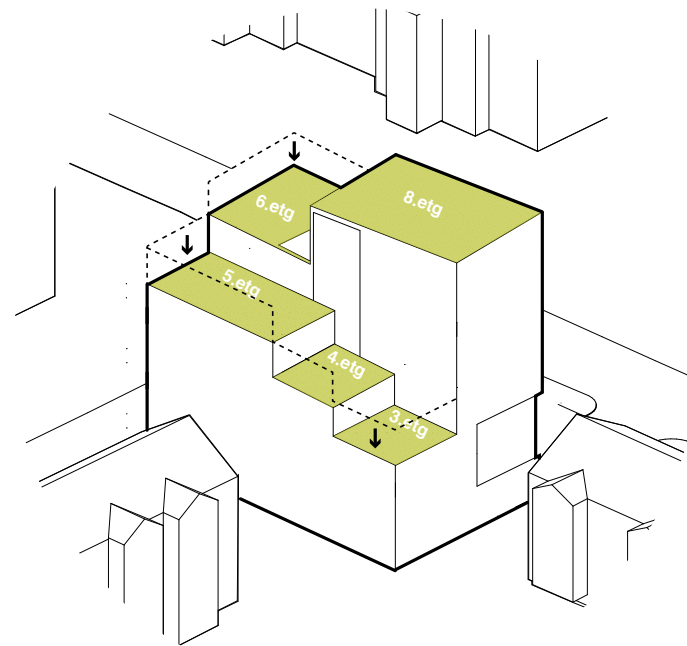


KONKURRANSEFORSLAG



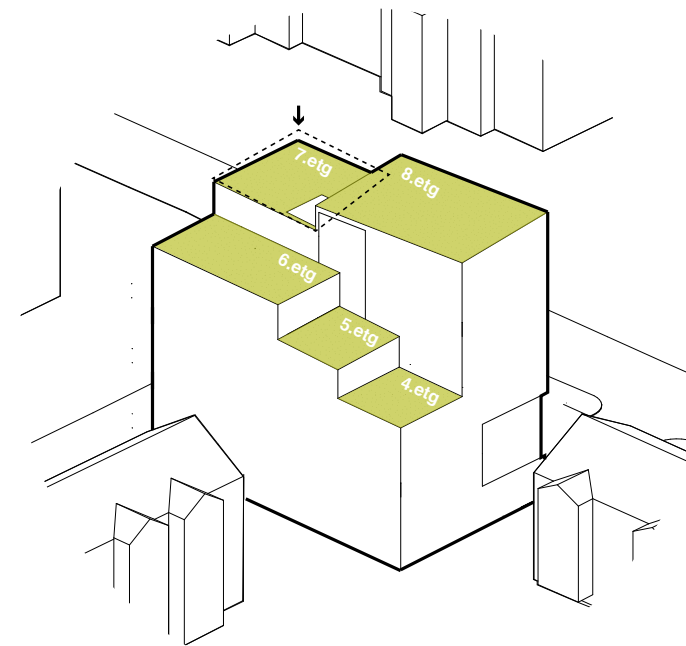
ALTERNATIV 1

endre avtrapping



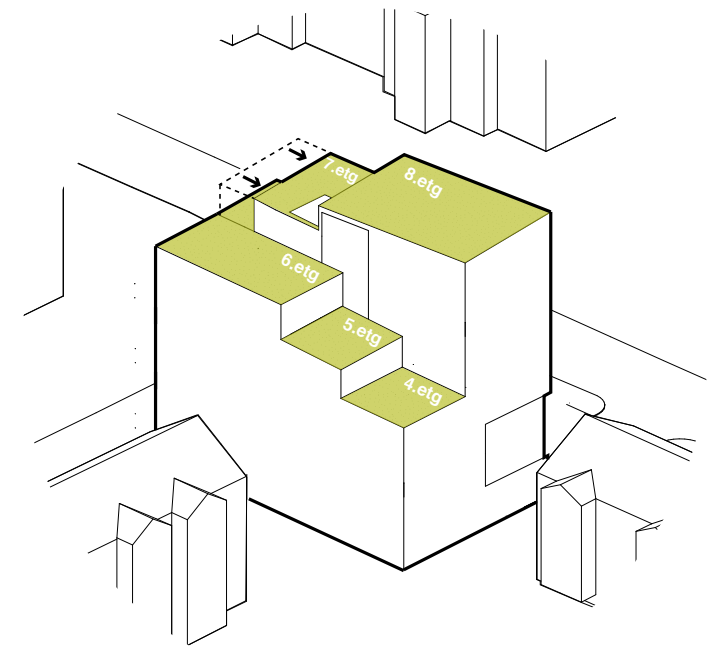
ALTERNATIV 2

endre takvinkel



ALTERNATIV 3

trekke inn toppetasje



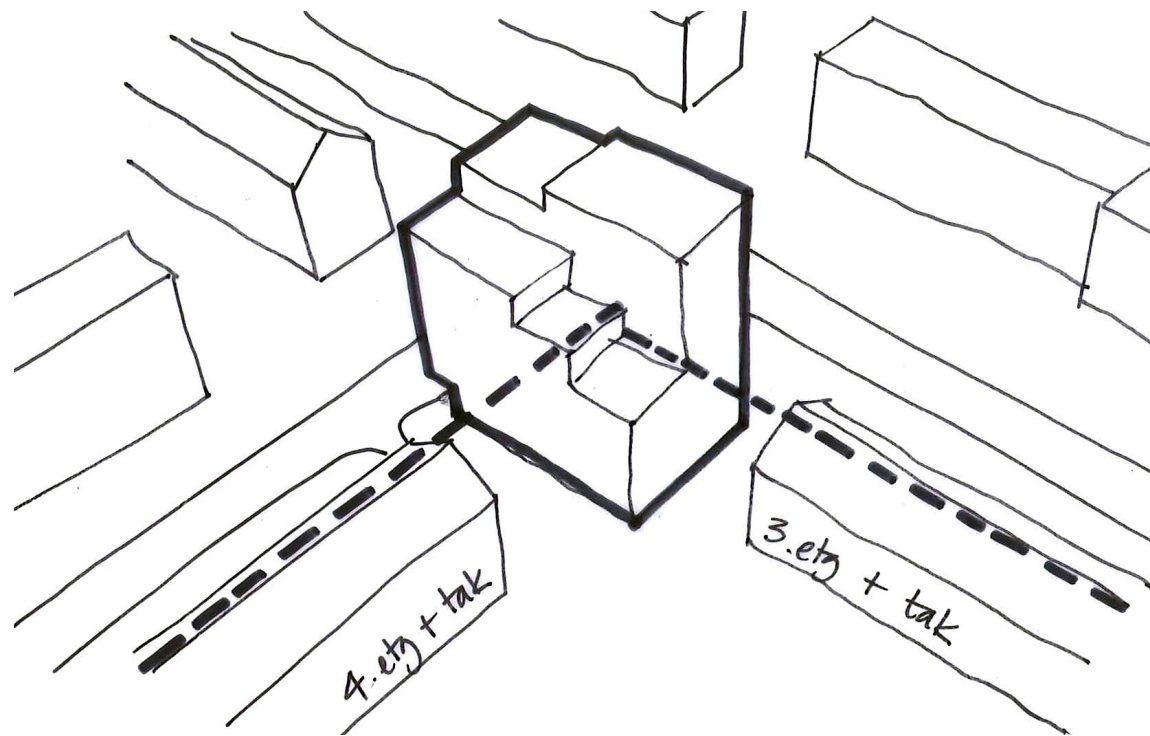
Konkurranseforslag



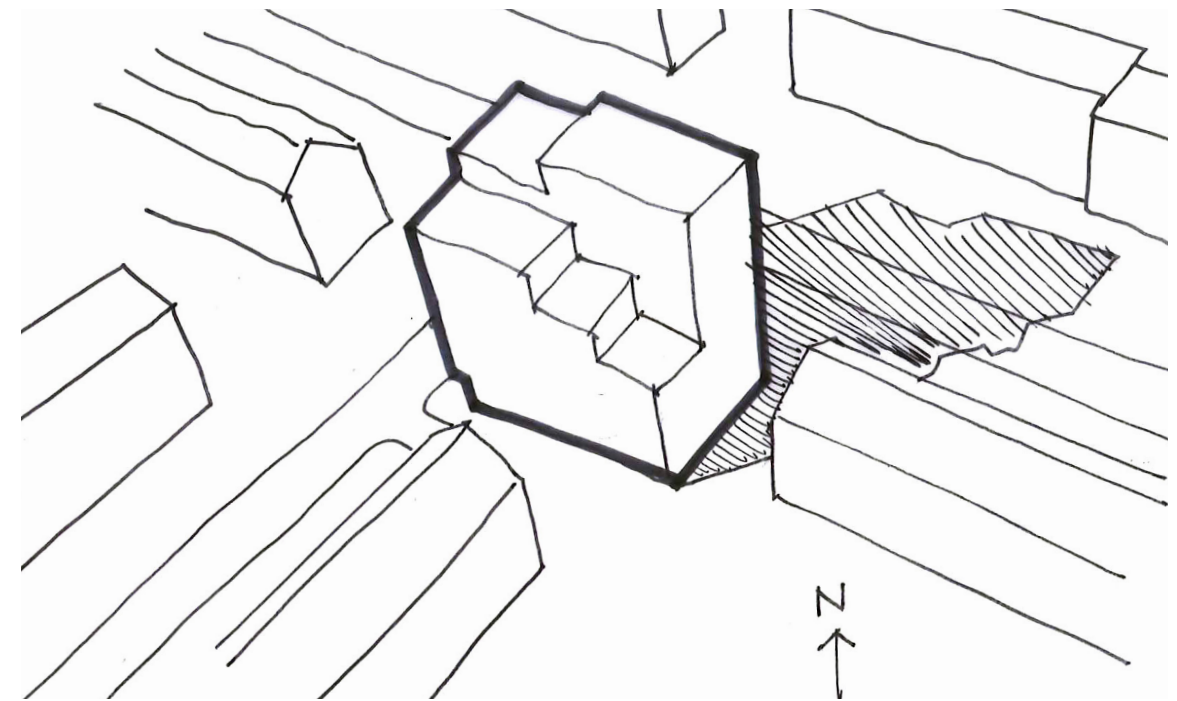
Alternativt volum



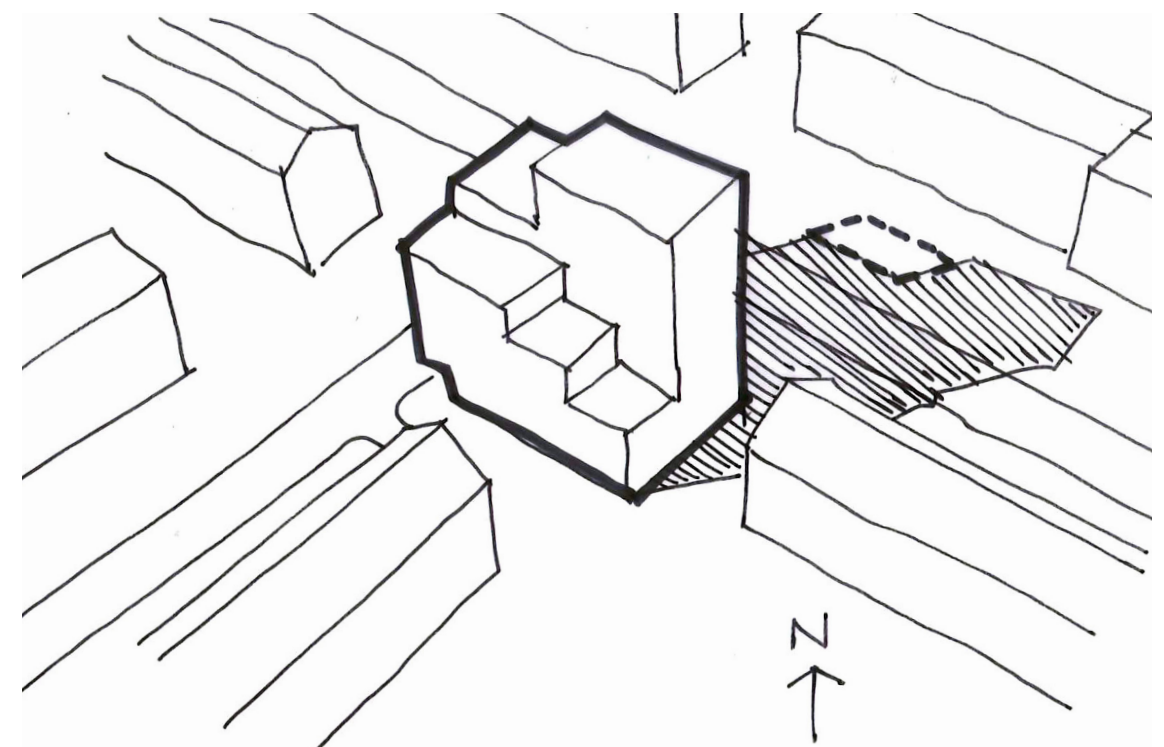
PROSESS MED KOMMUNE.....



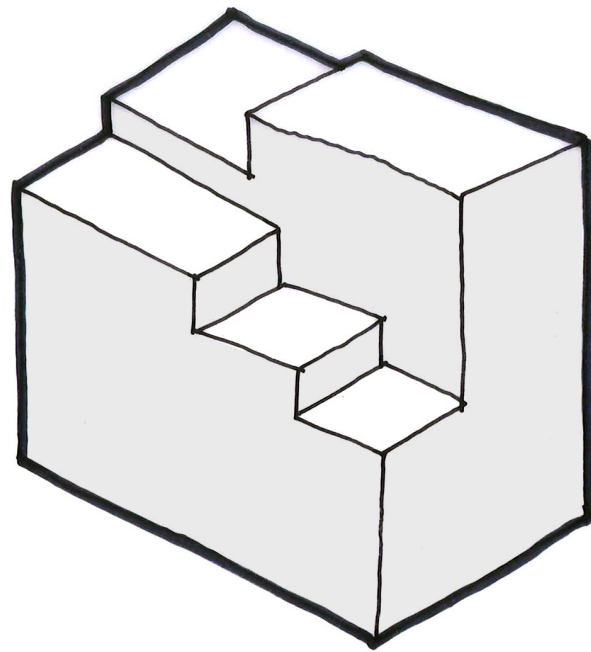
Samspill med eksisterende bebyggelse



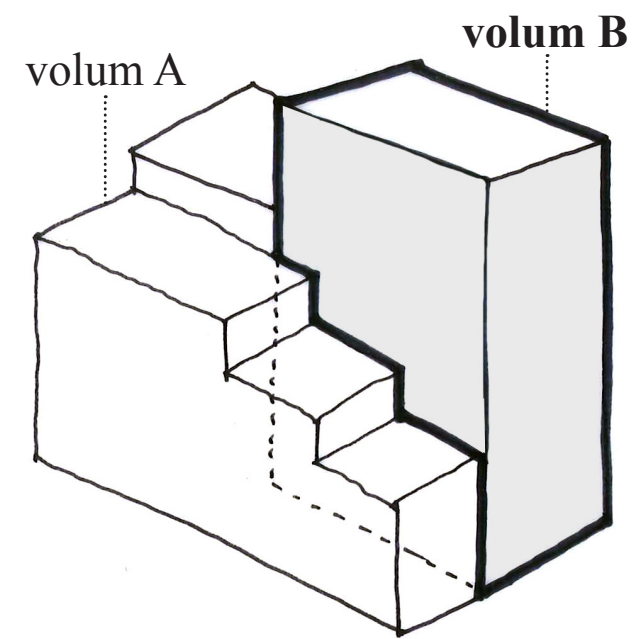
Skygger 1. mai - kl. 16 - konkurranseforslag



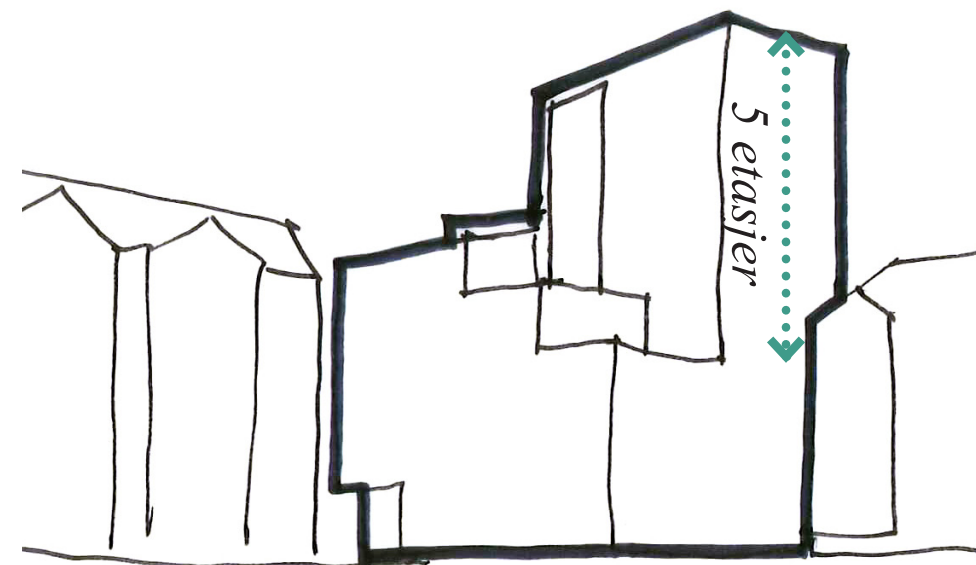
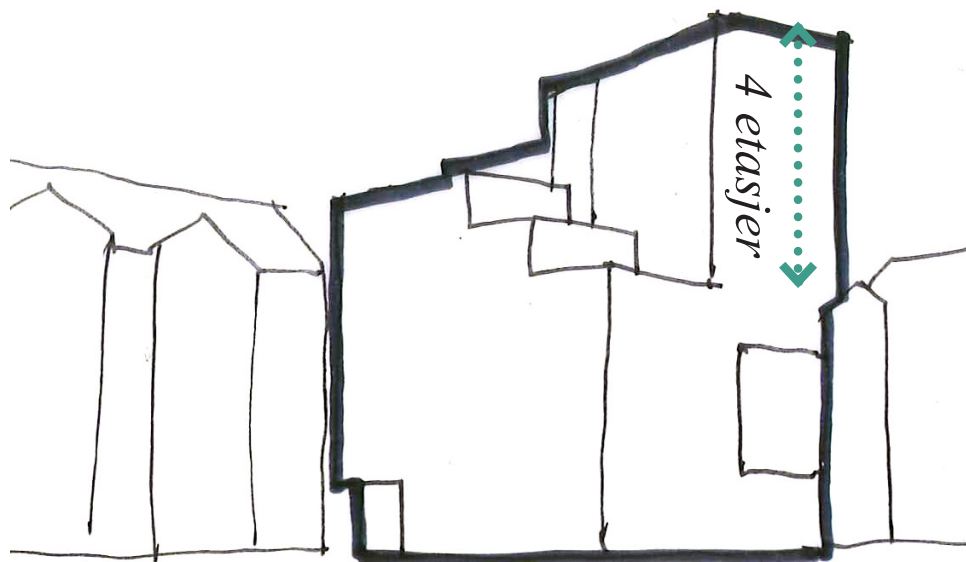
Skygger 1. mai - kl. 16 - redusert volum



Jevn nedtrapping



Todelt volum

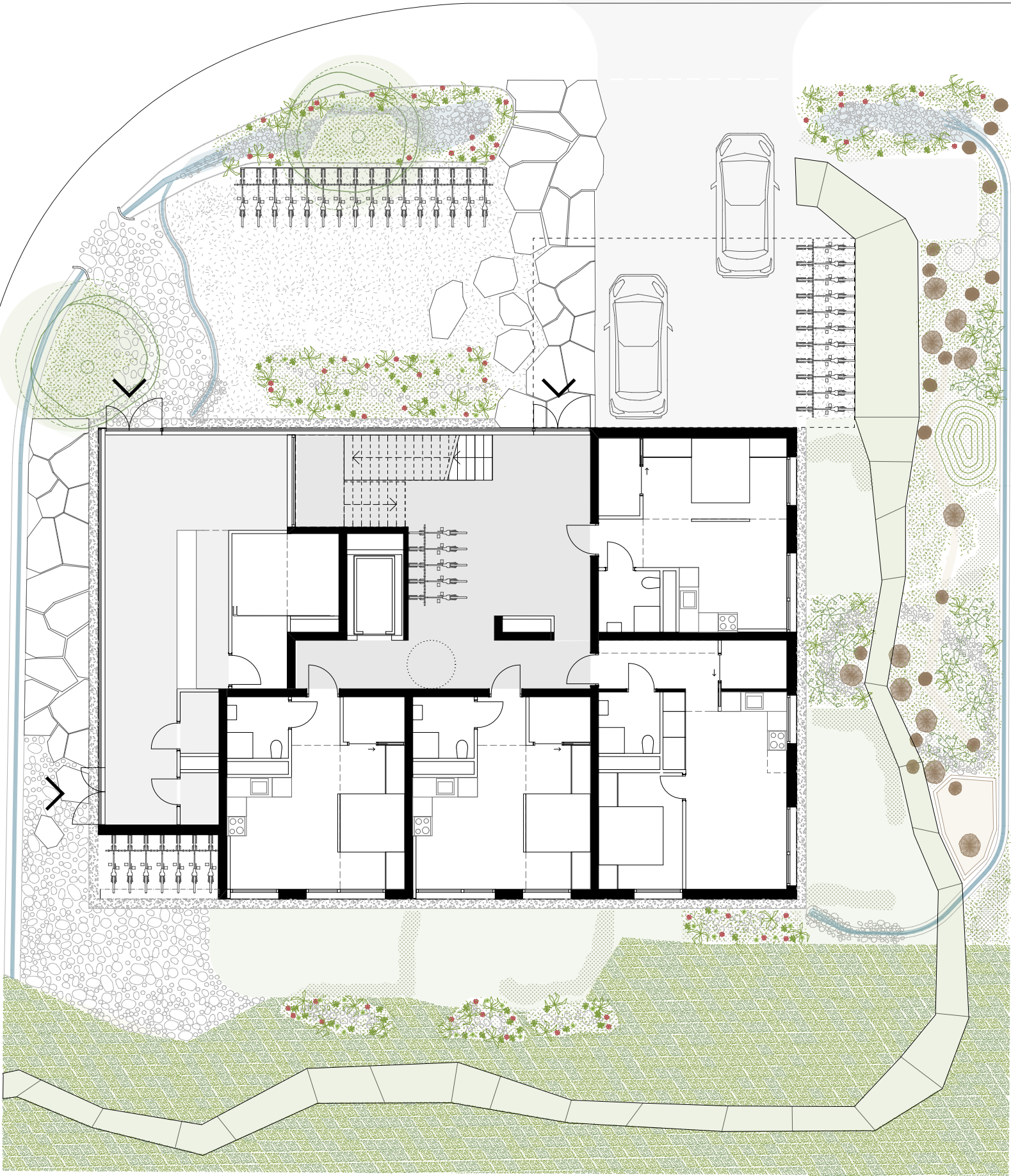


Fasade mot gårdsrom

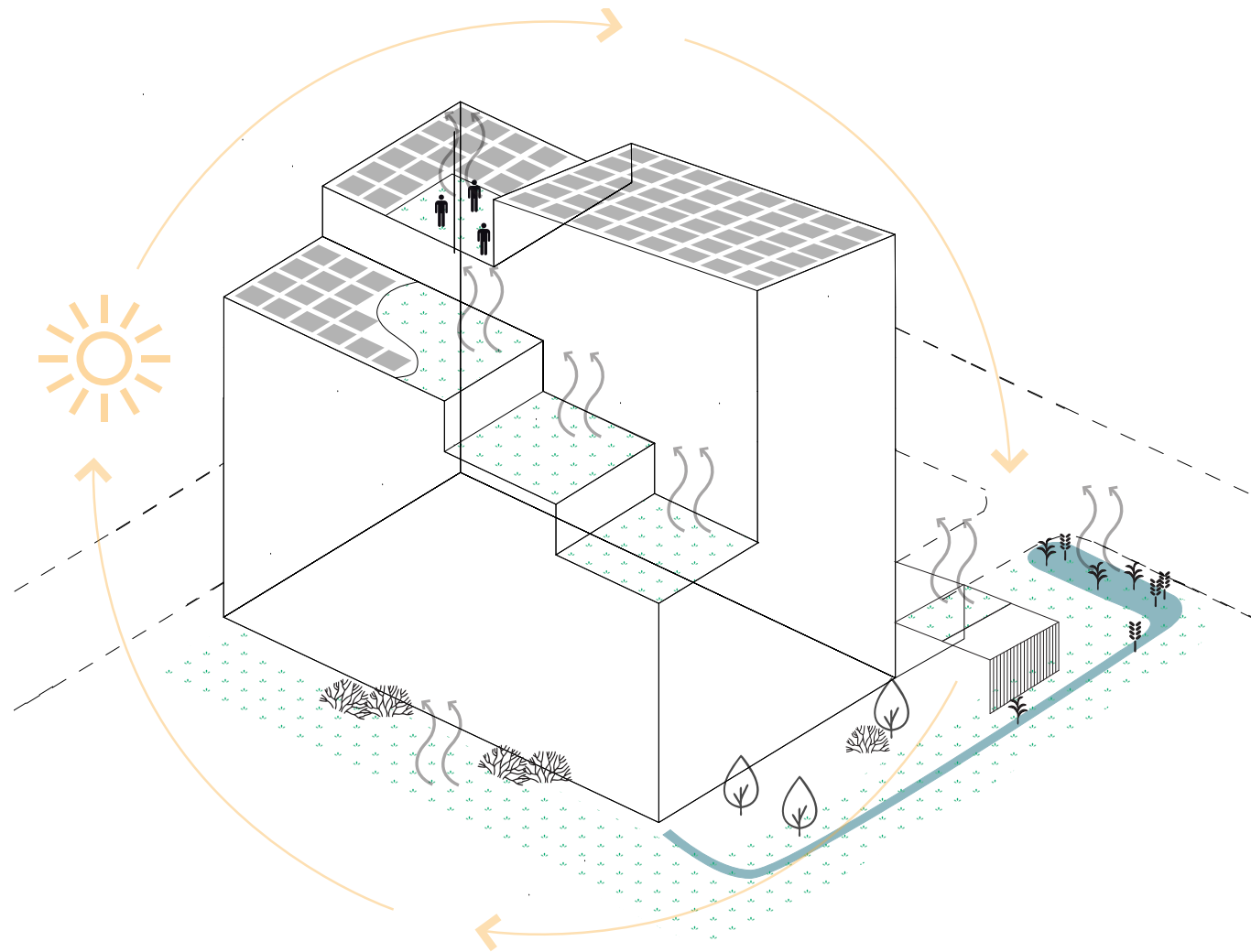


A detailed architectural rendering of a modern, multi-story building with a facade of vertical wooden slats. The building features large glass windows and balconies, some of which are visible through the facade. The building is situated on a street corner, with a crosswalk in the foreground. To the left, there are older brick buildings and parked cars. To the right, there are more modern buildings and a few people walking. The sky is a clear blue. The word 'TAKK!' is overlaid in the center of the image.

TAKK!



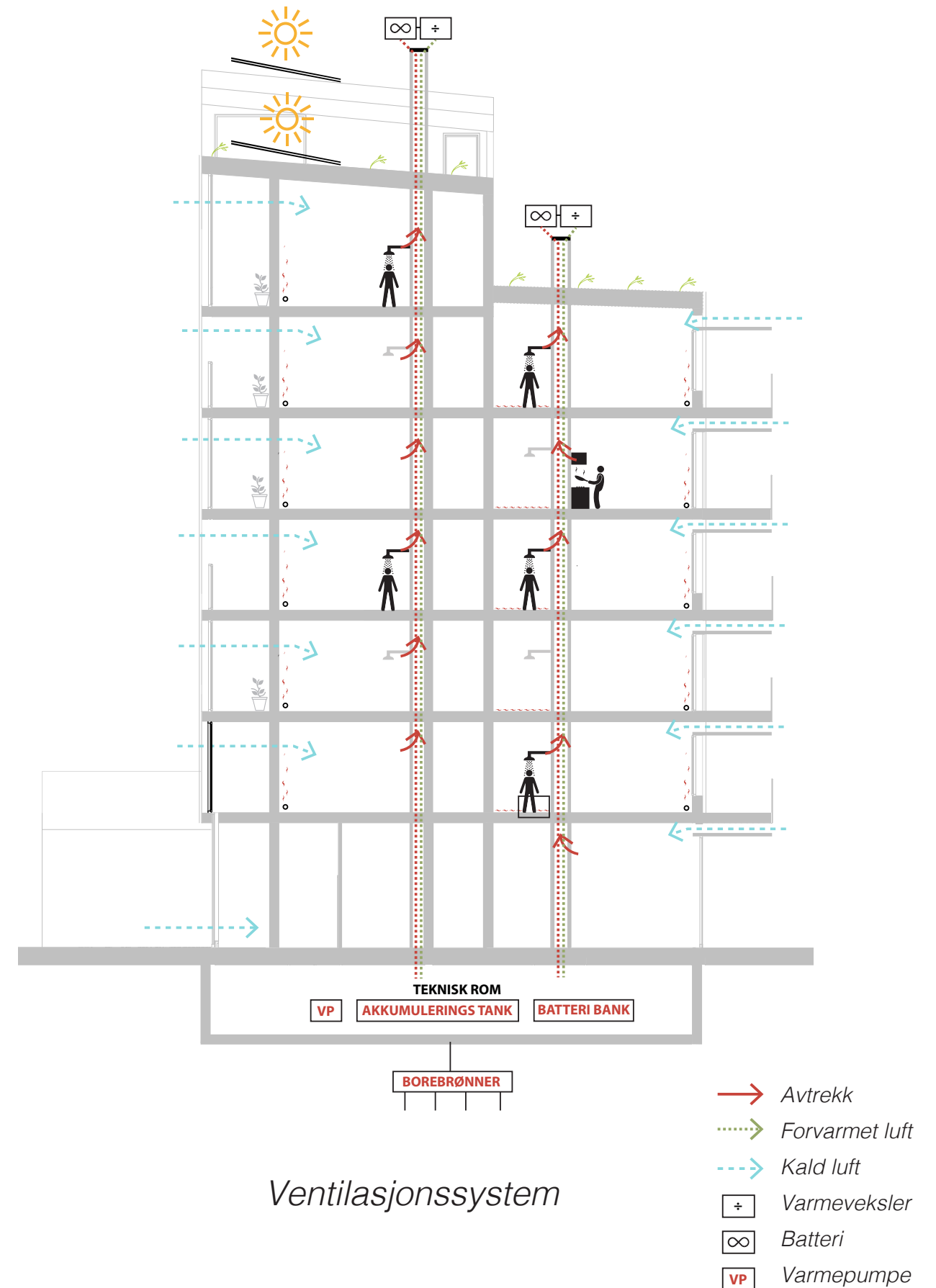
OVERVANN OG ENERGI



*Infiltrasjon, fordrøyning, absorpsjon og
fordampning av regnvann*

+

Lokal overvannsdisponering på tomta



MATERIALITET



Fasade nord



Fasade syd



*Fasademateriale,
Malmfuru*



*Okergul farge
i fellesområder*



*Himling baderom,
Osp*



*Trerammer i vinterhagene
og balkongene*